



Petronaval

ACERO Y SOLUCIONES |

SOLUCIONES PERSONALIZADAS EN
SUMINISTRO
DE **ACERO**

CATÁLOGO

ACERO - ABS

www.petronaval.com



Petronaval

ACERO Y SOLUCIONES |

ACERCA DE NOSOTROS

Suministro de acero para la industria petrolera.

Dentro de los principales productos que distribuimos se encuentran placas, tubería, rejillas, ángulos, soleras, vigas y conexiones, así como material certificado por ABS.

ABOUT US

PETRONAVAL distributes steel plates, pipes, angle bars, flat bars, round bars, gratings, beams, fittings, gaskets, bolts and ABS certified materials.

SOLUCIONES

Empresa dedicada 100% al servicio personalizado de sus clientes

El área de atención de Petronaval, es a nivel nacional y en donde el cliente lo necesite.

Petronaval hoy en día se respalda por el amplio portafolio de clientes con el que cuenta, la experiencia que maneja y el servicio que proporciona.

SOLUTIONS

Company 100% dedicated to personalized customer service

We offer attention all over the country wherever our customers require it.

Nos dedicamos al suministro de acero para la industria.

We are dedicated to the industry steel supply

ÍNDICE INDEX

PAG.

ACEROS STEEL

ESTRUCTURAL

- 2 Ángulos y Soleras Angles and flat bars
- 3 Barras Redondas y Cuadrados Round and square bars
- 3 Canales Channels
- 4 Vigas IPR IPR Beam
- 6 IPS IPS Beam
- 7 PTR PTR Beam
- 7 HSS HSS Beam

PLACAS PLATES

- 8 Placa Lisa Smooth plate
- 8 Placa Antiderrapante Anti-slip plate

TUBERÍAS PIPELINES

- 9 Tubería de proceso y estructural Process and structural pipeline

11 CONEXIONES CONNECTIONS

MATERIAL CERTIFICADO ABS

ABS CERTIFIED MATERIAL

- 12 Placa AH36 y A36 Plates AH36 AND A36
- 12 Angulos LD y LI Angles ES and US

REJILLAS GRIDS

- 14 Electroforjadas Electroforged Grids
- 15 Fibra de vidrio Fiberglass grid
- 16 Metal desplegado Expanded Metal
- 16 Placa troquelada Punched Plate

17 SUPER SACOS BIG BAGS

18 PROTECCION ANTICORROSIVA

CORROSION PROTECTION

- 19 Esparragos Studs
- 19 Tornillería Grade Screws
- 20 Empaques Gasket

ÁNGULOS EQUAL

LADOS IGUALES SIDES ANGLES

ESPESOR THICKNESS	ANCHO WIDTH	ESPESOR THICKNESS	ANCHO WIDTH	PESO WEIGHT
PULGADAS INCHES		MM		KG/M
1/8	3/4	3.2	19.0	0.88
	1		25.4	1.19
	1 1/4		31.7	1.5
	1 1/2		38.1	1.83
	1 3/4		44.4	2.14
3/16	2	4.8	50.8	2.46
	2 1/2		25.4	1.73
	3		31.7	2.2
	3 1/2		38.1	2.68
	4		44.4	3.15
	4 1/2		50.8	3.63
	5		63.5	4.57
1/4	2 1/2	6.3	76.2	5.52
	3		25.4	2.22
	3 1/2		31.7	2.86
	4		38.1	3.48
	4 1/2		44.4	4.12
	5		50.8	4.75
	5 1/2		63.5	6.1
	6		76.2	7.29
	6 1/2		88.9	8.63
	7		101.6	9.82
5/16	3	7.9	76.2	9.08
	3 1/2		88.9	10.71
	4		101.6	12.2
	4 1/2		127.0	15.29
	5		152.4	22.17
3/8	2	9.5	50.8	6.99
	2 1/2		63.5	8.78
	3		76.2	10.71
	3 1/2		88.9	12.57
	4		101.6	14.58
	4 1/2		127.0	15.29
	5		152.4	22.17
1/2	3	12.7	76.2	13.99
	4		101.6	19.05
	5		127.0	24.11
	6		152.4	36.01
	6 1/2		203.2	39.28
	7		254.0	57.88
	8		304.8	66.96
5/8	4	15.9	101.6	23.36
	6		152.4	36.01
	8		203.2	48.66
3/4	6	19.1	152.4	42.71
	8		203.2	57.88
7/8	8	22.2	203.2	66.96
1	8	25.4	203.2	75.89
1 3/8	8	28.6	203.2	84.67

ÁNGULOS UNEQUAL

LADOS DESIGUALES SIDES ANGLES

ESPESOR THICKNESS	ANCHO WIDTH	ESPESOR THICKNESS	ANCHO WIDTH	PESO WEIGHT
PULGADAS INCHES		MM		KG/M
3/16	3 x 2	4.8	76.2 x 50.8	4.57
	3 x 2		76.2 x 50.8	6.1
	4 x 3		76.2 x 76.2	8.63
3/8	4 x 3	9.5	101.6 x 76.2	12.65
	6 x 4		152.4 x 76.2	18.3
	6 x 4		152.4 x 101.6	24.11

** Se manejan a 6.10 y 12.20 mts.

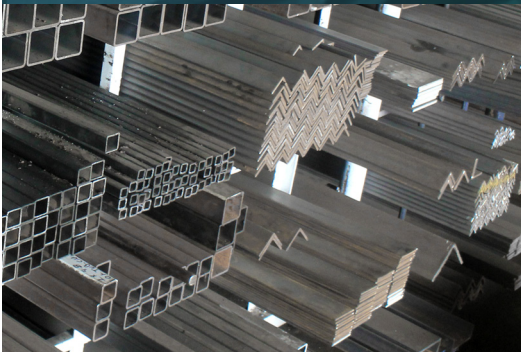
** in lengths of 6.10 or 12.20 meters

SOLERAS FLAT BAR

ESPESOR THICKNESS	ANCHO WIDTH	ESPESOR THICKNESS	ANCHO WIDTH	PESO WEIGHT		
PULGADAS INCHES		MM		KG/M		
1/8	1/2	3.2	12.7	0.32		
	3/4		19.0	0.47		
	1		25.4	0.63		
	1 1/4		31.7	0.79		
	1 1/2		38.1	0.95		
3/16	2	4.8	50.8	1.27		
	1/2		12.7	0.47		
	3/4		19.0	0.71		
	1		25.4	0.95		
	1 1/4		31.7	1.19		
	1 1/2		38.1	1.42		
	2		50.8	1.9		
1/4	1	6.3	25.4	1.27		
	1 1/4		31.7	1.58		
	1 1/2		38.1	1.9		
	2		50.8	2.53		
	2 1/2		63.5	3.17		
	3		76.2	3.79		
	4		101.6	5.06		
	5		127.0	6.32		
	6		152.4	7.59		
	8		203.2	10.13		
	10		254.0	12.66		
	12		304.8	15.18		
3/8	1	9.5	25.4	1.9		
	1 1/4		31.7	2.38		
	1 1/2		38.1	2.84		
	2		50.8	3.79		
	2 1/2		63.5	4.75		
	3		76.2	5.7		
	4		101.6	7.59		
	5		127.0	9.49		
	6		152.4	11.4		
	8		203.2	15.18		
	10		254.0	18.99		
	12		304.8	22.8		
	1/2		1	12.7	25.4	2.53
			1 1/2		38.1	3.79
			2		50.8	5.06
2 1/2		63.5	6.32			
3		76.2	7.59			
4		101.6	10.13			
5		127.0	12.66			
6		152.4	15.18			
8		203.2	20.24			
10		254.0	25.33			
12		304.8	30.36			
5/8		3	15.9		76.2	9.49
	4	101.6		12.66		
	6	152.4		18.99		
	8	203.2		25.33		

** Se manejan a 6.10 mts.

** in lengths of 6.10 meters



BARRAS REDONDAS Y CUADRADAS

ROUND AND SQUARE BARS

ESTRUCTURAL

MEDIDAS MEASURES		PESO WEIGHT	
PULG. INCHES	MM	REDONDOS ROUND KG / M	CUADRADOS SQUARE KG / M
3/8	9.5	0.56	0.71
1/2	12.0	—	1.20
5/8	12.7	0.99	1.27
3/4	15.9	1.55	1.98
7/8	19.0	2.24	2.85
1	22.2	3.04	—
1 1/8	25.4	3.98	5.06
1 1/4	28.6	5.03	—
1 1/2	31.7	6.21	—
1 3/4	38.1	8.95	11.39
2	44.4	12.18	—
2 1/2	50.8	15.91	20.25
3	63.5	24.85	—

CANALES CHANNELS

PERFIL PROFILE		PESO WEIGHT		ANCHO DE PATIN SKATE WIDTH		ESPESOR DE PATIN WEB WIDTH		ESPESOR DE DEL ALMA WEB THICKNESS	
PULG. INCHES	MM	KG / M	LB. / FT	PULG. INCHES	MM	PULG. INCHES	MM	PULG. INCHES	MM
3	76.2	5.20	3.50	1.372	35	0.273	6.9	0.132	3.4
		6.10	4.10	1.410	36	0.273	6.9	0.170	4.3
4	101.6	6.70	4.50	1.584	40	0.296	7.5	0.125	3.2
		8.04	5.40	1.584	40	0.296	7.5	0.184	4.7
5	127	9.97	6.70	1.750	44	0.320	8.1	0.190	4.8
6	152.4	12.20	8.20	1.920	48	0.343	8.7	0.200	5.1
		15.63	10.50	2.034	51	0.343	8.7	0.314	8.0
		19.35	13.00	2.157	55	0.343	8.7	0.437	11.1
8	203.2	17.11	11.50	2.260	57	0.390	9.9	0.220	5.6
		20.46	13.75	2.343	59	0.390	9.9	0.303	7.7
		27.90	18.75	2.527	64	0.390	9.9	0.487	12.4
10	254	22.76	15.30	2.600	65	0.436	11.1	0.240	6.1
		29.76	20.00	2.739	69	0.436	11.1	0.379	9.6
		37.20	25.00	2.886	73	0.436	11.1	0.526	13.4
		44.64	30.00	3.033	76	0.436	11.1	0.673	17.1

VIGAS IPR

BEAMS IPR

DIMENSIONES		PESO		PERALTE		ANCHO DEL PATÍN		ESPESOR DEL PATÍN		ESPESOR DEL ALMA	
DIMENSIONS		WEIGHT		CAMBER		SKATE WIDTH		SKATE THICKNESS		WEB THICKNESS	
PULG. INCHES	MM	KG/MT	LB./FT	PULG. INCHES	MM	PULG. INCHES	MM	PULG. INCHES	MM	PULG. INCHES	MM
4 x 4	101.6 x 101.6	19.3	13	4.2	106	4.1	103	0.3	8.9	0.3	7.1
6 x 4	152.4 x 101.6	12.7	9	5.8	148	3.9	100	0.2	4.8	0.2	4.3
		13.4	9	5.9	150	3.9	100	0.2	5.6	0.2	4.3
		17.9	12	6.0	153	4.0	102	0.3	7.1	0.2	5.8
		23.8	16	6.3	160	4.0	102	0.4	10.4	0.3	6.6
6 x 6	152.4 x 152.4	23.3	15	6.0	152	6.0	152	0.3	6.6	0.2	5.8
		29.8	20	6.2	157	6.0	153	0.4	9.4	0.3	6.6
		37.2	25	6.4	162	6.1	154	0.5	11.7	0.3	8.1
		14.9	10	7.9	200	3.9	100	0.2	5.3	0.2	4.3
8 x 4	203.2 x 101.6	19.3	13	8.0	203	4.0	102	0.3	6.6	0.2	5.8
		22.3	15	8.1	206	4.0	102	0.3	8.1	0.3	6.3
		26.8	18	8.1	207	5.3	133	0.3	8.4	0.2	5.8
8 x 5 1/4	203.2 x 133.3	31.3	21	8.3	210	5.3	134	0.4	10.2	0.3	6.3
		35.7	24	7.9	201	6.5	165	0.4	10.2	0.3	6.3
		41.7	28	8.1	205	6.5	166	0.5	11.9	0.3	7.4
8 x 6 1/2	203.2 x 165.1	46.1	31	8.0	203	8.0	203	0.4	11.2	0.3	7.4
		52.1	35	8.1	206	8.0	204	0.5	12.7	0.3	7.9
		59.5	40	8.3	210	8.1	205	0.6	14.2	0.4	9.1
8 x 8	203.2 x 203.2	71.4	48	8.5	216	8.1	206	0.7	17.4	0.4	10.2
		17.9	12	9.9	251	4.0	101	0.2	5.3	0.2	4.8
		22.3	15	10.0	254	4.0	102	0.3	6.9	0.2	5.8
10 x 4	254.0 x 101.6	25.3	17	10.1	257	4.0	102	0.3	8.4	0.2	6.1
		28.3	19	10.2	260	4.0	102	0.4	10.2	0.3	6.3
		32.7	22	10.2	258	5.8	146	0.4	9.1	0.2	6.1
		38.7	26	10.3	262	5.8	147	0.4	11.2	0.3	6.6
10 x 5 3/4	254.0 x 146.0	44.6	30	10.5	27	5.8	148	0.5	13.0	0.3	7.6
		49.1	33	9.7	247	8.0	202	0.4	11.2	0.3	7.4
		58.0	39	9.9	252	8.0	203	0.5	13.5	0.3	8.1
10 x 8	254.0 x 203.2	67.0	45	10.1	257	8.0	204	0.6	15.7	0.4	8.9
		72.9	49	10.0	253	10.0	254	0.6	14.2	0.3	8.6
		80.4	54	10.1	256	10.0	255	0.6	15.7	0.4	9.4
10 x 10	254.0 x 254.0	101.2	68	10.4	264	10.1	257	0.8	19.6	0.5	11.9
		20.8	14	11.9	303	4.0	101	0.2	5.8	0.2	5.1
		23.8	16	12.0	305	4.0	101	0.3	6.9	0.2	5.6
12 x 4	304.8 x 101.6	28.3	19	12.2	309	4.0	102	0.4	8.9	0.2	6.1
		32.7	22	12.3	313	4.0	102	0.4	10.9	0.3	6.6
		38.7	26	12.2	310	6.5	165	0.4	9.7	0.2	5.8
		44.6	30	12.3	313	6.5	166	0.4	11.2	0.3	6.6
12 x 6 1/2	304.8 x 165.1	52.1	35	12.5	317	6.6	167	0.5	13.2	0.3	7.6
		59.5	40	11.9	303	8.0	203	0.5	13.2	0.3	7.6
		67.0	45	12.1	306	8.1	204	0.6	14.7	0.3	8.6
		74.4	50	12.2	310	8.1	205	0.6	16.3	0.4	9.4
12 x 8	304.8 x 203.2	78.9	53	12.1	306	10.0	254	0.6	14.7	0.4	8.9
		86.3	58	12.2	310	10.0	254	0.6	16.3	0.4	9.1
		96.7	65	12.1	308	12.0	305	0.6	15.5	0.4	9.9
12 x 10	304.8 x 254.0	107.1	72	12.3	311	12.0	306	0.7	17.0	0.4	10.9
		117.6	79	12.4	314	120.1	307	0.7	18.8	0.5	11.9
		142.9	96	12.7	323	12.2	309	0.9	22.9	0.6	14.0

VIGAS IPR

BEAMS IPR

DIMENSIONES		PESO		PERALTE		ANCHO DEL PATÍN		ESPESOR DEL PATÍN		ESPESOR DEL ALMA	
DIMENSIONS		WEIGHT		CAMBER		SKATE WIDTH		SKATE THICKNESS		WEB THICKNESS	
PULG. INCHES	MM	KG/MT	LB./FT	PULG. INCHES	MM	PULG. INCHES	MM	PULG. INCHES	MM	PULG. INCHES	MM
14 X 5	355.6 X 127	32.7	22	13.74	349	5.00	127	0.34	8.60	0.23	5.80
		38.7	26	13.91	353	5.03	128	0.42	10.70	0.26	6.60
14 X 6 3/4	355.6 X 171.4	44.6	30	13.84	352	6.73	171	0.39	9.90	0.27	6.90
		50.6	34	13.98	355	6.75	171	0.46	11.70	0.29	7.40
		56.5	38	14.10	358	6.77	172	0.52	13.20	0.31	7.90
14 X 8	355.6 X 203.2	64.0	43	13.66	347	8.00	203	0.53	13.50	0.31	7.90
		71.4	48	13.79	350	8.03	204	0.60	15.20	0.34	8.60
		78.9	53	13.92	354	8.06	205	0.66	16.80	0.37	9.40
14 X 10	355.6 X 254.0	90.8	61	13.89	353	10.00	254	0.65	16.50	0.38	9.70
		101.2	68	14.04	357	10.04	255	0.72	18.30	0.42	10.70
		110.2	74	14.17	360	10.07	256	0.79	20.10	0.45	11.40
		122.0	82	14.31	363	10.13	257	0.86	21.80	0.51	13.00
14 X 14 1/2	355.6 X 368.3	133.9	90	14.02	356	14.52	369	0.71	18.00	0.44	11.20
		147.3	99	14.16	360	14.57	370	0.78	19.80	0.49	12.40
		162.2	109	14.32	364	14.61	371	0.86	21.80	0.53	13.50
		178.6	120	14.48	368	14.67	373	0.94	23.90	0.59	15.00
		196.4	132	14.66	372	14.73	374	1.03	26.20	0.65	16.50
14 X 16	355.6 X 406.4	215.8	145	14.78	375	15.50	394	1.09	27.70	0.68	17.30
		236.6	159	14.98	380	15.57	395	1.19	30.20	0.75	19.00
		261.9	176	15.22	387	15.65	398	1.31	33.30	0.83	21.10
		287.2	193	15.48	393	15.71	399	1.44	36.60	0.89	22.60
		314.0	211	15.72	399	15.80	401	1.56	39.60	0.98	24.90
		346.7	233	16.02	407	15.89	404	1.72	43.70	1.07	27.20
16 X 5 1/2	406.4 X 139.7	38.7	26	15.69	399	5.50	140	0.35	8.90	0.25	6.30
		46.1	31	15.88	403	5.53	140	0.44	11.20	0.28	7.10
16 X 7	406.4 X 177.8	53.6	36	15.86	403	6.99	178	0.43	10.90	0.30	7.60
		59.5	40	16.01	407	7.00	178	0.51	13.00	0.31	7.90
		67.0	45	16.13	410	7.04	179	0.57	14.50	0.35	8.90
		74.4	50	16.26	413	7.07	180	0.63	16.00	0.38	9.70
		84.8	57	16.43	417	7.12	181	0.72	18.30	0.43	10.90
16 X 10 1/4	406.4 X 260.3	99.7	67	16.33	415	10.24	260	0.67	17.00	0.40	10.20
		114.6	77	16.52	420	10.30	262	0.76	19.30	0.46	11.70
18 X 6	457.2 X 152.4	52.1	35	17.70	450	6.00	152	0.43	10.90	0.30	7.60
		59.5	40	17.90	455	6.02	153	0.53	13.50	0.32	8.10
		68.4	46	18.06	459	6.06	154	0.61	15.50	0.36	9.10
18 x 7 1/2	457.2 x 190.5	74.4	50	17.99	457	7.50	190	0.57	14.50	0.36	9.10
		81.8	55	18.11	460	7.53	191	0.63	16.00	0.39	9.90
		89.3	60	18.24	463	7.56	192	0.70	17.80	0.42	11.70
		96.7	65	18.35	466	7.59	193	0.75	19.00	0.45	11.40
		105.6	71	18.47	469	7.64	194	0.81	20.60	0.50	12.70
		113.1	76	18.21	463	11.04	280	0.68	17.30	0.43	10.90
18 x 11	457.2 x 279.4	128.0	86	18.39	467	11.09	282	0.77	19.60	0.48	12.20
		144.3	97	18.59	472	11.15	283	0.87	22.10	0.54	13.70
		157.7	106	18.73	476	11.20	284	0.94	23.90	0.59	15.00
		177.1	119	18.97	482	11.27	286	1.06	26.90	0.66	16.80
		188.0	132	19.21	488	11.33	287	1.18	30.20	0.73	18.60
21 x 6 1/2	533.4 x 165.1	65.5	44	20.66	525	6.50	165	0.45	11.40	0.35	8.90
		74.4	50	20.83	529	6.53	166	0.54	13.70	0.38	9.70

VIGAS IPR

BEAMS IPR

DIMENSIONES		PESO		PERALTE		ANCHO DEL PATÍN		ESPESOR DEL PATÍN		ESPESOR DEL ALMA	
DIMENSIONS		WEIGHT		CAMBER		SKATE WIDTH		SKATE THICKNESS		WEB THICKNESS	
PULG. INCHES	MM	KG/MT	LB./FT	PULG. INCHES	MM	PULG. INCHES	MM	PULG. INCHES	MM	PULG. INCHES	MM
21 x 8 1/4	533.4 x 209.5	92.30	62	20.99	533	8.24	209	0.62	15.7	0.40	10.20
		101.20	68	21.13	537	8.27	210	0.69	17.5	0.43	10.90
		123.50	83	21.43	544	8.36	212	0.84	21.3	0.52	13.20
21 x 12 1/4	533.4 x 311.1	138.40	93	21.62	549	8.42	214	0.93	23.6	0.58	14.70
		150.30	101	21.36	543	12.29	312	0.80	20.3	0.50	12.70
		165.20	111	21.51	546	12.34	313	0.88	22.4	0.55	14.00
24 x 7	609.6 x 177.8	181.50	122	21.68	551	12.39	315	0.96	24.4	0.60	15.20
		81.80	55	23.57	599	7.01	178	0.51	13	0.40	10.20
		92.30	62	23.74	603	704.00	179	0.59	15	0.43	10.90
24 x 9	609.6 x 228.6	101.20	68	23.73	603	8.97	228	0.59	15	0.42	10.70
		113.10	76	23.92	608	8.99	228	0.68	17.3	0.44	11.20
		125.00	84	24.10	612	9.02	229	0.77	19.6	0.47	11.90
		139.90	94	24.31	617	9.07	230	0.88	22.4	0.52	13.20
24 X 12 3/4	609.6 x 323.8	153.30	103	24.53	623	9.00	229	0.98	24.9	0.55	14.00
		154.80	104	24.06	611	12.75	324	0.75	19	0.50	12.70
		174.10	117	24.26	616	12.80	325	0.85	21.6	0.55	14.00
		194.90	131	24.48	622	12.86	327	0.96	24.4	0.61	15.50
27 X 10	685.8 x 254	217.30	146	24.74	628	12.90	328	1.09	27.7	0.65	16.50
		125.00	84	26.71	678	9.96	253	0.64	16.3	0.46	11.70
		139.90	94	26.92	684	9.99	254	0.75	19	0.49	12.40
		151.80	102	27.09	688	10.02	255	0.83	21.1	0.52	13.20
27 x 14	685.8 x 355	169.60	114	27.29	693	10.07	256	0.93	23.6	0.57	14.50
		217.30	146	27.38	695	13.97	355	0.98	24.9	0.61	15.50
		239.60	161	27.59	701	14.02	356	1.08	27.4	0.66	16.80
30 x 10 1/2	762 X 266.7	133.90	90	29.53	750	10.40	264	0.61	15.5	0.47	11.90
		147.30	99	29.65	753	10.45	265	0.67	17	0.52	13.20
		160.70	108	29.83	758	10.48	266	0.76	19.3	0.55	14.00
		172.60	116	30.01	762	10.50	267	0.85	21.6	0.57	14.50
33 x 11 1/2	838.2 X 292.1	175.60	118	32.86	835	11.48	292	0.74	18.8	0.55	14.00
		193.40	130	33.09	840	11.51	292	0.86	21.8	0.58	14.70
		209.80	141	33.30	846	11.54	293	0.96	24.4	0.61	15.50
36 X 12	914.4 X 304.8	200.90	135	35.55	903	11.95	304	0.79	20.1	0.60	15.20
		223.20	150	35.85	911	11.98	304	0.94	23.9	0.63	16.00
		238.10	160	36.01	915	12.00	305	1.02	25.9	0.65	16.50
40 X 12	1016 X 304.8	221.70	149	38.20	970	11.81	300	0.83	21.1	0.63	16.00

VIGAS IPS

BEAMS IPS

PERFIL		PESO		ANCHO DEL PATÍN		ANCHO DEL ALMA	
PROFILE		WEIGHT		SKATE WIDTH		WEB WIDTH	
PULGADAS INCHES	MM	KG/MT	LB./FT	PULGADAS INCHES	MM	PULGADAS INCHES	MM
3	76.20	8.48	5.7	2.33	59	0.17	4
4	101.60	11.46	7.7	2.66	68	0.19	5
5	127.00	14.88	10.0	3.00	76	0.21	5
6	152.40	18.60	12.5	3.33	85	0.23	6
8	203.20	27.38	18.4	4.00	102	0.27	7

PTR BEAMS PTR

HSS BEAMS HSS

A-500°B
ESTRUCTURAL

DIMENSIONES EXTERIORES EXTERIOR DIMENSIONS		ESPESOR THICKNESS		COLOR DE IDENTIFICACIÓN IDENTIFICATION COLOR	PESO WEIGHT
PULGADAS INCHES	MM	PULGADAS INCHES	MM		KG/M
3/4 X 3/4 1 X 1	19 X 19 25 X 25	0.048	1.2	C18	0.70
		0.048	1.2	C18	0.95
		0.075	1.9	C14	1.33
		0.105	2.7	VERDE	1.76
1 1/4 X 1 1/4"	32 X 32	0.135	3.4	ROJO	2.13
		0.048	1.2	C18	1.22
		0.075	1.9	C14	1.71
		0.048	1.2	C18	1.47
1 1/2 X 1 1/2	38 X 38	0.075	1.9	C14	2.09
		0.105	2.7	BLANCO	2.82
		0.120	3.0	VERDE	3.17
		0.150	3.8	ROJO	3.81
		0.075	1.9	C14	2.09
		0.048	1.2	C18	1.96
2 x 1 2 x 2	51 x 25 51 x 51	0.075	1.9	C14	2.85
		0.105	2.7	BLANCO	3.89
		0.120	3.0	VERDE	4.38
		0.150	3.8	ROJO	5.33
2 1/2 x 2 1/2	64 x 64	0.120	3.0	BLANCO	5.60
		0.135	3.8	VERDE	6.23
		0.180	4.6	ROJO	8.00
		0.075	1.9	C14	3.23
3 x 1 1/2 3 x 2	76 x 38 76 x 51	0.120	3.0	BLANCO	5.60
		0.135	3.8	VERDE	6.23
		0.180	4.6	ROJO	8.00
		0.120	3.0	BLANCO	6.81
3 x 3	76 x 76	0.150	3.8	VERDE	8.37
		0.180	4.6	ROJO	9.81
		0.250	6.3	1/4"	13.11
		0.120	3.0	BLANCO	8.03
3 1/2 x 3 1/2	89 x 89	0.150	3.8	VERDE	9.89
		0.180	4.6	ROJO	11.62
		0.250	6.3	1/4	15.64
		0.075	1.9	C14	3.99
4 x 1 1/2 4 x 2	102 x 38 102 x 51	0.120	3.0	BLANCO	6.81
		0.150	3.8	VERDE	8.37
		0.180	4.6	ROJO	9.81
		0.120	3.0	BLANCO	8.03
4 x 3	102 x 76	0.150	3.8	VERDE	9.89
		0.180	4.6	ROJO	11.62
		0.250	6.3	1/4	15.64
		0.120	3.0	BLANCO	9.24
4 x 4	102 x 102	0.180	4.6	ROJO	13.44
		0.250	6.3	AZUL	18.18
		0.180	4.6	ROJO	17.06
		0.250	6.3	AZUL	23.24
5" x 5"	127x 127	0.120	3.0	BLANCO	11.68
		0.180	4.6	ROJO	17.06
		0.250	6.3	AZUL	23.24
6 x 4	152 x 102	0.120	3.0	BLANCO	11.68
		0.180	4.6	ROJO	17.06
		0.250	6.3	AZUL	23.24

DIMENSIONES EXTERIORES EXTERIOR DIMENSIONS		ESPESOR THICKNESS		PESO WEIGHT
PULGADAS INCHES	MM	PULGADAS INCHES	MM	KG/M
4" x 4"	102 x 102	0.375	9.5	25.74
		0.375	9.5	33.28
6" x 4"	152 x 102	0.187	4.7	21.62
		0.250	6.3	28.36
6" x 6"	152 x 152	0.312	7.9	34.75
		0.375	9.5	40.98
		0.500	12.7	52.46
		0.187	4.7	21.64
8" x 4"	203 x 102	0.250	6.3	28.36
		0.375	9.5	40.98
		0.500	12.7	52.46
8" x 6"	203 x 152	0.250	6.3	33.44
		0.375	9.5	48.52
		0.187	4.7	29.18
8" x 8"	203 x 203	0.250	6.3	38.52
		0.312	7.9	47.38
		0.375	9.5	56.07
10" x 6"	254 x 152	0.500	12.7	72.79
		0.187	4.7	29.34
		0.250	6.3	38.52
10" x 10"	254 x 254	0.187	4.7	36.89
		0.250	6.3	48.52
		0.312	7.9	60.16
12" x 6"	305 x 152	0.375	9.5	71.31
		0.375	9.5	71.31
		0.500	12.7	92.95
12" x 8"	305 x 203	0.250	6.3	58.69
		0.312	7.9	72.79
		0.375	9.5	86.56
12" x 12"	305 x 305	0.500	12.7	113.28
		0.375	9.5	101.64
		0.500	12.7	133.44
16" x 16"	406 x 406	0.375	9.5	116.89
		0.500	12.7	153.77

En largos de 6.10 y 12.20 mts

PLACA LISA SMOOTH PLATE

A-36, A-283 GRADO C, A572 GR. 50

ESPESOR THICKNESS		PESO TEORICO KG / HOJA TEORICAL WEIGHT KG/BLADE							PESO WEIGHT
PULGADAS INCHES	MM	3' x 10'	4' x 8'	4' x 10'	5' x 10'	5' x 20'	6' x 20	8' x 20'	KG/M
1/8	3.048	67.39	71.88	89.86	-----	-----	-----	-----	24.18
3/16	4.80	105.00	112.00	140.00	176.00	351.00	421.00	562.00	37.78
1/4	6.30	140.00	150.00	187.00	234.00	468.00	562.00	749.00	50.38
5/16	7.90	176.00	187.00	234.00	293.00	585.00	702.00	935.00	62.67
3/8	9.50	211.00	225.00	281.00	351.00	702.00	842.00	1,123.00	75.56
1/2	12.70	281.00	300.00	374.00	468.00	936.00	1,123.00	1,498.00	100.75
5/8	15.90	351.00	374.00	468.00	585.00	1,170.00	1,404.00	1,872.00	125.94
3/4	19.00	421.00	449.00	562.00	702.00	1,404.00	1,685.00	2,346.00	151.13
1	25.40	562.00	599.00	749.00	936.00	1,872.00	2,246.00	2,995.00	201.50
1 1/4	31.70	702.00	749.00	936.00	1,170.00	2,340.00	2,808.00	3,744.00	251.88
1 1/2	38.10	842.00	899.00	1,123.00	1,404.00	2,808.00	3,370.00	4,493.00	302.25
1 3/4	44.40	983.00	1,048.00	1,310.00	1,621.00	3,244.00	3,931.00	5,188.00	352.63
2	50.80	1,123.00	1,198.00	1,498.00	1,872.00	3,779.00	4,493.00	5,990.00	403.00

PLACA ANTI-SLIP

ANTIDERRAPANTE PLATE

CALIBRE CALIBER	ESPESOR THICKNESS	PESO TEORICO KG / HOJA TEORICAL WEIGHT KG/BLADE					PESO WEIGHT
PULGADAS INCHES	MM	3'X10'	4'X10'	5'X10'	5'X20'	KG/M2	
16	0.06	1.524	-----	54.43	-----	-----	14.65
14	0.075	1.905	51.03	68.04	-----	-----	18.31
12	0.105	2.667	71.44	95.25	-----	-----	25.63
1/8	0.125	3.175	83.69	111.58	139.48	278.96	30.02
3/16	0.188	4.775	118.39	157.85	198.31	394.63	42.47
1/4	0.25	6.35	153.09	204.12	255.15	510.29	54.92
3/8	0.375	9.525	-----	296.65	-----	-----	79.82

TUBERIA DE PROCESO Y ESTRUCTURAL

EXTREMOS LISOS Y/O BISELADOS

PROCESS AND STRUCTURAL PIPELINE

PLAIN AND / OR BEVELED ENDS

DIÁMETRO NOMINAL REAL ACTUAL NOMINAL DIAMETER		ESPESOR DE PARED WALL THICKNESS		CED	PESO POR LONGITUD WEIGHT PER LENGTH	
PULGADAS INCHES	MM	PULGADAS INCHES	MM		KG / MT	LB / FT
3/8	17.10	0.091	2.31	40 STD	0.84	0.57
		0.126	3.20	80 X	1.1	0.74
1/ 2	21.30	0.108	2.77	40 STD	1.27	0.85
		0.147	3.73	80 XS	1.62	1.09
3/ 4	26.70	0.113	2.87	40 STD	1.69	1.13
		0.154	3.91	80 XS	2.2	1.47
		0.219	5.56	160	2.9	1.94
		0.308	7.82	XXS	3.64	2.44
1	33.40	0.133	3.38	40 STD	2.5	1.68
		0.179	4.55	80 XS	3.24	2.17
		0.250	6.35	160	4.24	2.84
1 1 / 4	42.20	0.140	3.58	40 STD	3.3	2.27
		0.191	4.85	80 XS	4.47	3
		0.250	6.35	120	5.81	3.76
1 1/2	48.30	0.145	3.68	40 STD	4.05	2.72
		0.200	5.09	80 XS	5.41	3.63
		0.281	7.14	160	7.25	4.86
		0.400	10.15	XXS	9.55	6.41
2	60.30	0.154	3.91	40 STD	5.44	3.65
		0.218	5.54	80 XS	7.48	5.02
		0.344	8.74	160	11.11	7.46
		0.436	11.07	XXS	13.44	9.04
2 1/2	73.00	0.203	5.16	40 STD	8.53	5.79
		0.276	7.01	80 XS	11.41	7.66
		0.375	9.52	160	14.9	10.01
		0.552	14.02	XXS	20.39	13.71
3	88.90	0.188	4.78	----	9.92	6.65
		0.216	5.49	40 STD	11.29	7.58
		0.250	6.35	----	12.93	8.63
		0.300	7.62	80 XS	15.27	10.25
		0.438	11.13	160	21.35	14.32
		0.600	15.24	XXS	27.68	18.6
3 1/2	101.60	0.226	5.74	40 STD	13.57	9.11
		0.318	8.08	80 XS	18.63	12.51
4	114.30	0.219	5.56	----	14.91	10.01
		0.237	6.02	40 STD	16.07	10.79
		0.281	7.14	----	18.87	12.66
		0.312	7.92	----	20.78	13.98
		0.337	8.56	80 XS	22.32	14.98
		0.531	13.49	160	33.54	22.51
		0.674	17.12	XXS	41.03	27.57

TUBERIA DE PROCESO Y ESTRUCTURAL API 5L, A 106, A36

EXTREMOS LISOS Y/O BISELADOS

PROCESS AND STRUCTURAL PIPELINE API 5L, A 106, A36

PLAIN AND / OR BEVELED ENDS

DIÁMETRO NOMINAL REAL ACTUAL NOMINAL DIAMETER		ESPESOR DE PARED WALL THICKNESS		CED	PESO POR LONGITUD WEIGHT PER LENGHT	
PULGADAS INCHES	MM	PULGADAS INCHES	MM		KG / MT	LB / FT
5	141.30	0.258	6.50	40 STD	21.77	14.62
		0.375	9.52	60 XS	30.97	20.78
		0.500	12.70	120	40.28	27.06
		6.250	15.88	160	49.12	32.99
		0.750	19.05	XXS	57.43	38.60
6	168.30	0.250	6.35	-----	25.36	17.02
		0.280	7.11	40 STD	28.26	18.97
		0.312	7.92	-----	31.32	21.04
		0.432	10.07	80XS	42.56	28.57
		0.662	14.27	120	54.20	36.39
8	219.10	0.710	18.25	160	67.57	45.39
		0.250	8.35	20	33.31	22.36
		0.277	7.04	30	36.81	24.70
		0.312	7.32	-----	41.24	27.70
		0.322	8.18	40 STD	42.55	28.55
10	273.00	0.406	10.31	50	53.08	35.64
		0.438	11.13	-----	57.08	38.30
		0.500	12.70	80 XS	84.64	43.39
		0.719	18.26	120	90.44	60.71
		0.812	20.62	140	100.93	67.82
		0.906	23.01	150	111.27	74.76
		0.250	6.35	20	41.77	28.04
		0.279	7.09	-----	46.51	31.20
		0.307	7.80	30	51.03	34.24
		0.365	5.27	40 STD	60.31	40.48
12	323.8	0.500	12.70	60 XS	81.55	54.74
		0.594	15.09	80	96.01	64.43
		0.844	21.44	120	133.06	89.29
		1.000	25.40	XXS	155.10	104.23
		0.250	6.35	20	49.73	33.38
12	323.8	0.330	8.38	30	65.40	43.77
		0.375	9.53	STD	73.88	49.56
		0.406	10.31	40	79.73	53.52
		0.500	12.70	XS	97.46	65.42
		0.562	14.28	60	108.96	73.15
		0.688	17.48	80	132.08	88.63
		1.000	25.40	120	186.97	125.43

CONEXIONES CONECTIONS

Conexiones de acero al carbono sin costura para aplicaciones de presión y temperatura moderadas.

- Conducción de gases
- Conducción de hidrocarburos
- Calderas
- Industria de la construcción

Codos, TEES, Reducciones, Bridas, Tapones.

Seamless and carbon steel connections for moderate pressure and temperature applications.

- Gas conduction
- Hydrocarbons conduction
- Cauldrons
- Construction Industry

Elbows, tee , reducers, flanges, plugs.

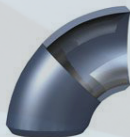
Codo 45°

45° ELBOW



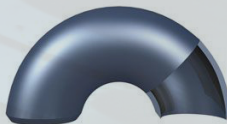
Codo 90°

90° ELBOW



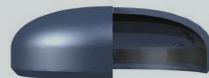
Codo 180° Radio Corto

180° ELBOW SHORT RADIUS



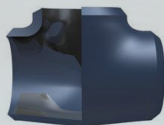
Tapón Capa

STOPPER LAYER



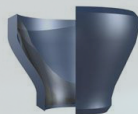
Te Recta

STRAIGHT T



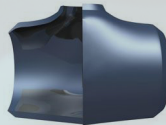
Reducción Concéntrica

CONCENTRIC REDUCTION



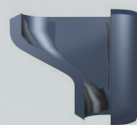
Te Reducida

REDUCED T



Reducción Excéntrica

ECCENTRIC REDUCTION



También manejamos conexiones en acero inoxidable, galvanizados, acero forjado y hierro maleable.

We also handle stainless steel connections, galvanized steel, forged steel and malleable iron.

MATERIAL CERTIFICADO ABS

ABS CERTIFIED MATERIAL



ABS A / ABS B ABS AH36 / DH36 / EH36

Este grado de placa de acero se utiliza casi exclusivamente en la industria naval para la construcción de las partes estructurales de los buques, barcasas, plataformas y equipos marinos.

Es certificado por ABS (American Bureau of Shipbuilding) y presenta la mayor resistencia de los aceros de grado ABS .

This steel plate grade is used almost exclusively in the naval industry for the vessels, barges, platforms and marine equipment structural parts construction.

The grade is certified by ABS (American Bureau of Shipbuilding) and presents the highest resistance of the ABS steel grades.

LOOKUP IN STEEL PLAN

AH & DH 36: Group ABS Grade DHTAB
DH & EH36: Group API Grade 2HQAB

ACERO CERTIFICADO ABS

ABS CERTIFIED STEEL

A-36, AH-36, DH-36, EH-36, A-572 Gr. 50.

GRADO GRADE	ESPESOR THICKNESS	ANCHO WIDTH		LONGITUD LENGTH	
		PULG	FT.	PULG.	FT.
ABS	1/4"	96	8	240	20
ABS	5/16"	96	8	240	20
ABS	3/8"	96	8	240	20
ABS	1/2"	96	8	240	20
ABS	5/8"	96	8	240	20
ABS	3/4"	96	8	240	20
ABS	1"	96	8	240	20

Pregunte por otros espesores y medidas.

COMPOSICIÓN QUÍMICA

CHEMICAL COMPOSITION

AH36	C (%)	Mn (%)	P (%)	S (%)	Si (%)	Al (%)
	≤ 0,18	≤ 1,60	≤ 0,035	≤ 0,035	≤ 0,50	≤ 0,020

Las placas incluyen certificados del material y cert ABS.

ANGULOS LADOS DESIGUALES

UNEQUAL SIDES ANGLES

CERTIFICADOS POR ABS A-36 Y AH-36 *CERTIFIED BY ABS A-36 AND AH-36*

GRADO GRADE	MEDIDA MEASURE	ESPESOR. THICKNESS
ABS	4" X 3"	1/4"
AH36		5/16"
ABS		3/8"
AH36	5" X 3"	5/16"
ABS		5/16"
AH36	6" X 4"	3/8"
ABS		1/2"
AH36		3/8"
ABS	7" X 4"	1/2"
AH36		3/8"
ABS	8" X 4"	1/2"
AH36		1/2"
ABS		1/2"

PROPIEDADES MECANICAS

MECHANICAL PROPERTIES

Tensile: 70 to 90 ksi

Yield: 51 ksi min

Elongation: 17 min in 8" 20 min in 2"

Charpy Requirements (LCVN):

AH36: 25 ft/lbs @ 32°F

DH36: 25 ft/lbs @ -4°F

EH36: 25 ft/lbs @ -40°F

REJILLAS DE FIBRAS DE VIDRIO

FIBERGLASS GRIDS USES AND APPLICATIONS

Rejillas pultruida y moldeadas de plástico reforzado con fibra de vidrio (prfv) son excelentes para uso en los casos en que oxidación o la corrosión vuelve poco practico el uso de productos de acero.

Características

- Alta resistencia mecánica.
- Alta resistencia química.
- Peso ligero.
- Libres de mantenimiento.

Usos y aplicaciones

- Plataformas marinas.
- Pasos de gato.
- Embarcaderos.
- Andadores.
- Pisos antiderrapantes.
- Mezanines.
- Trincheras.
- Muelles.
- Industria minera y de la construcción.

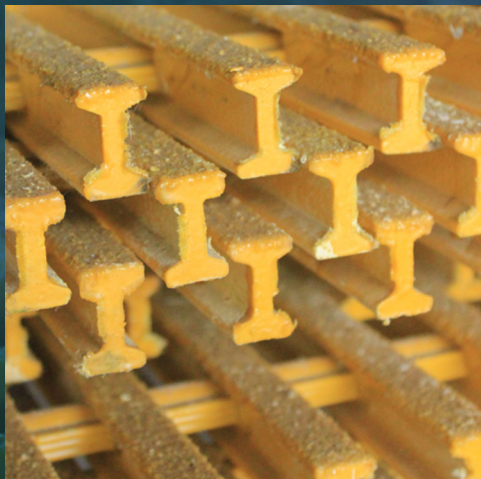
Uses and applications

- Offshore platforms.
- Cat steps.
- Piers.
- Walkers.
- Non-skid floors.
- Mechanical high strength.
- Chemical high resistance.
- Light weight.
- Maintenance -free.
- Mezzanines.
- Trenches.
- Docks.
- Mining and construction industry.

Shaped and pultruded grids with fiberglass reinforced plastic ideal for use in cases where oxidation or corrosion make impractical the use of steel products.

Characteristics

- Mechanical high strength.
- Chemical high resistance.
- Light weight.
- Maintenance -free.



REJILLAS ELECTROFORJADAS

ELECTROFORGED GRIDS

La rejilla forjada lisa o dentada, se compone de soleras que pueden variar en espesor y peralte, dependiendo de la carga a la que van a ser sometidas y el claro que deban cubrir. Estas son unidas por varillas transversales (rigidizadoras) procesadas y cortadas en frío.

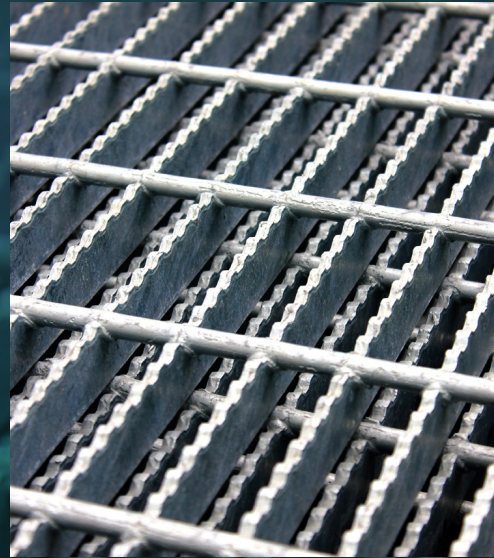
La unión entre solera y varilla se logra mediante el proceso de electroforjado que garantiza la fusión en cada cruce.

The smooth or toothed forged grid consists of slabs that can vary in thickness and camber, depending on the load that will be submitted on and the clear to be covered. These are joined by transverse rods (stiffening) processed and cut cold twisted.

The union between slab and rod is achieved by electroforged process that warrants the fusion in every intersection.

Usos y aplicaciones

- Pisos.
 - Plataformas marinas de perforación.
 - Helipuertos.
 - Vagones de ferrocarril.
 - Plataformas de maquinas llenadoras.
 - Tanques de deposito.
 - Cocinas.
 - Plantas generadoras de energía
- Entre otros.



Uses and applications

- Floors.
- Offshore drilling platforms.
- Heliports.
- Railcars.
- Platforms filling machines.
- Storage tanks.
- Kitchens.
- Power plants.
- Among others.

METAL DESPLEGADO EXPANDED METAL

Es una malla metálica formada de una sola pieza, sin costura ni soldadura alguna, que presenta una serie de aberturas de tamaño uniforme, en forma de rombos o diamantes. Se fabrica mediante un proceso de troquelado a los rollos u hojas de acero, que permite desarrollar múltiples diseños de mallas.

Es un producto muy versátil que se ofrece en diversos calibres, dimensiones, tipos de acabado y formas de presentación.

It is a metal mesh formed in one piece, without any welding or seam, having a plurality of uniformly sized openings in rhomboid or diamond form. It is manufactured using a stamping process to the rolls or sheet of steel, allowing multiple designs develop meshes.

It is a very versatile product that is offered in several sizes, dimensions, types of finishes and styles.

Fig. 1 - Metal Desplegado en rollos

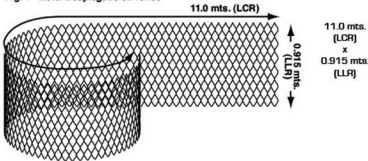
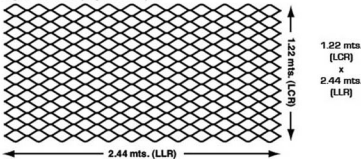


Fig. 2 - Metal Desplegado en hojas



Al ordenar metal desplegado deberá indicar los siguiente :

- Tipo de material. (lamina de acero al carbón, galvanizada, etc.)
- Calibre del material
- Abertura nominal del rombo o diamante(de centro a centro).

When ordering expanded metal you must indicate the following:

- Type of material. (Sheet of carbon steel, galvanized , etc.)
- Caliber Material
- Nominal opening of the rhomboid or diamond (center to center)

PLACA TROQUELADA PUNCH PLATE

La fabricamos acorde a las especificaciones del cliente.

The manufacture is according to customer specifications .

SÚPER SACOS SUPER SACKS

Conocidos también como IBC bags, Big bag

Son contenedores fabricados con tela de polipropileno, con capacidad de carga de 500kg hasta 2,000kg, utilizado para almacenar y transportar material a granel como arena, cemento, plástico, polvos, químicos, entre otros.

Also known as IBC bags, Big bag

Containers made of polypropylene fabric, with a load capacity of 500kg to 2,000kg, using for storing and transporting bulk material such as sand, cement, plastics, powders, chemicals, among others.



Modelos disponibles:

- Boca abierta fondo plano.
- Boca abierta válvula de descarga.
- Doble válvula de descarga.
- Medidas de:
120 x 120 x 1.60
.99 x .99 x 1.36

Models available:

- Open mouth flat bottom.
- Mouth open valve.
- Dual drain valves .
- Measures :
120 x 120 x 1.60
.99 x .99 x 1.36

PROTECCION ANTICORROSIVA CORROSION PROTECTION

Sand Blast Limpieza con chorro de abrasivo seco

Servicio de limpieza por medio de sopleteado con arena sílice para eliminar de la superficie del acero todos los restos de óxido, pintura y otras sustancias presentes, proporcionándole a la superficie, además de limpieza, una rugosidad o perfil de anclaje que permite la adherencia apropiada del recubrimiento.

Sand Blast: Blasting abrasive dry

Cleaning service through silica sand blown out to remove from the steel surface all traces of rust, paint and other substances, giving to the surface in, roughness or surface profile to allows for proper adhesion coating.



Aplicación de recubrimientos industriales

Previa preparación de superficie se efectúa la aplicación de recubrimientos basando en sistemas de las normas Pemex como mencionar un ejemplo o de acuerdo a los requerimientos y necesidades de nuestros cliente.

Application of industrial coatings

Surface preparation prior to coating application is made based on the Pemex systems standards or according to the requirements and needs of our customers.

ESPARRAGOS STUDS

- Espárragos (stud bolts) Grados: B5, B6, B7, B7M, B8, B8M, B16, L7 y LM.
- Cadmiunizados, Galvanizados, recubrimiento de resina y Niquel electroless.
- Tuercas (heavy hex nuts) Grados: 2H, 2HM, 3, 4, 6, 7, 7M, 8, 8M, 8C.
- Barra roscada (threaded bar).
- Studs bolts B5, B6, B7, B7M, B8, B8M, B16, L7 and LM.
Cadmiun plated, Galvanized, resin coating and electroless Nickel.
- Nuts (heavy hex nuts) Grade: 2H, 2HM, 3, 4, 6, 7, 7M, 8, 8M, 8C.
- Threaded rod (threaded bar).



TORNILLERIA GRADE SCREWS

- Tornillos de Grado.
- Tornillos Galvanizados.
- Tornillos de Acero Inoxidable.
- Tornillos "U" ("U" Bolts).
- Tornillos Milimétricos.
- Birlos.
- Chavetas.
- Grade Screws.
- Galvanized Screws.
- Stainless Steel Screws.
- Bolts "U" ("U" Bolts).
- Millimeter Screws.
- Studs.
- Wedges.

EMPAQUES GASKET

Los empaques espirometálicos se fabrican conforme la Norma ASME B16.20, para ser instalados entre bridas ASME B16.5 en todos los tamaños y clases de presión amparados por estos estándares.

Manejamos todo tipo de juntas espirometálicas y R.T.J. (Ring Type Joint), en todos los diámetros y librajés.

The metal-spiral gaskets are manufactured according to the standard ASME B16.20, to be installed between ASME B16.5 flanges in all sizes and pressure classes covered by these standards.

We handle all types of spiral wound gaskets and RTJ (Ring Type Joint), in all diameters and librajés.



Nuestras líneas de productos han sido aprobados por el "American Petroleum Institute" (API) y cumplen con todos los estándares internacionales.

Our product lines have been approved by the "American Petroleum Institute" (API) and meet all international standards.



Disponibles
las 24 horas

Available
24 hours



Rápida
Respuesta

Quick
Answer



Amplio
Surtido

Wide
Assortment



Atención
Personalizada

Personalized
Attention



Centro de
Atención
al cliente

Customer
Service



ACERO Y SOLUCIONES |

Oficinas Centrales

- 📍 Calle 47, # 80 Col. Tecolutla.
Cd. del Carmen, Campeche. Méx.
- ☎ [938] 382 4888, 384 0119, 381 4833
Cel. [938] 152 6383

Sucursal Tampico.

- 📍 Esmeralda # 613
Fraccionamiento Cheirel ,
Tampico, Tamaulipas. Méx
- ☎ [938] 152 2016

- ✉ ventas@petronaval.com
www.petronaval.com

